



PLX-Pure Lead High Rate

PLX12-360 (12V360W)



Specifications

| | | |
|---|--|--------------------------|
| Rated Voltage | 12V | |
| Nominal Rate ($W_{15}, 1.67V/cell$) | 360W | |
| Nominal Capacity ($C_{10}, 1.80V/cell$) | 90Ah | |
| Dimension | Length | 306±2mm (12.05 inches) |
| | Width | 168±2mm (6.61 inches) |
| | Container Height | 207±2mm (8.15 inches) |
| | Total Height | 210±2mm (8.27 inches) |
| Approx. Weight | 30.0 Kg (66.1 lbs) | |
| Terminal | M6 | |
| Container Material | PC-ABS flame retardant jar and cover to UL94 V-0 | |
| Max. Discharge Current | 1080A | |
| Internal Resistance (25°C) | Approx. 3.60mΩ(Fully charged) | |
| Operating Temp.Range | Discharge | -40 ~ 65°C (-40 ~ 149°F) |
| | Charge | 0 ~ 54°C (32 ~ 129°F) |
| | Storage | -20 ~ 40°C (-4 ~ 104°F) |
| Nominal Operating Temp. Range | 25±3°C (77±5°F) | |
| Max.Charging Current(25°C) | 27.0A | |
| Charge voltage(25°C) | Float | 13.62V |
| | Temp. Coefficient | -3mV/cell/°C |
| | Equalization | 14.1~14.4V |
| Effect of temp. to Capacity | 40°C (104°F) | 103% |
| | 25°C (77°F) | 100% |
| | 0°C (32°F) | 86% |

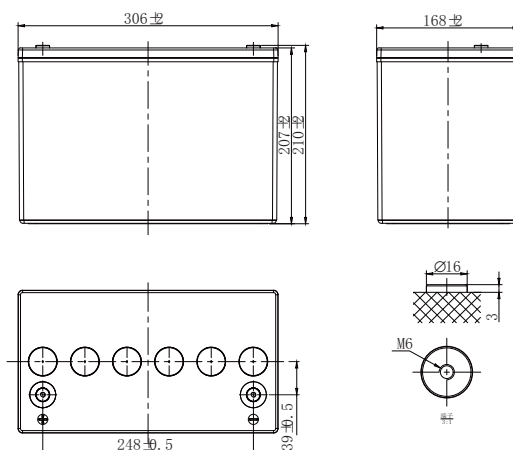
Self Discharge

PLX series batteries can be stored up to 24 months at 25°C(77°F), For higher temperatures the time interval will be shorter.

Battery needs to be given a freshening charge when the OCV approach 2.10V/cell or when the maximum storage time is reached, whichever occurs first.



Layout



Constant Current Discharge (Amperes) at 25 °C (77°F)

| F.V/Time | 5min | 10min | 15min | 20min | 30min | 45min | 1h | 2h | 3h | 4h | 5h | 8h | 10h | 20h |
|------------|-------|-------|-------|-------|-------|-------|------|------|------|------|------|------|------|------|
| 1.85V/cell | 256.1 | 187.2 | 149.8 | 134.1 | 99.7 | 73.9 | 60.0 | 33.2 | 23.7 | 19.0 | 16.2 | 10.7 | 8.90 | 4.69 |
| 1.80V/cell | 294.9 | 215.8 | 167.0 | 146.5 | 106.5 | 77.7 | 62.4 | 34.7 | 24.8 | 19.8 | 16.9 | 11.1 | 9.00 | 4.78 |
| 1.75V/cell | 322.3 | 236.2 | 180.9 | 156.3 | 113.4 | 79.9 | 64.2 | 35.7 | 25.4 | 20.3 | 17.3 | 11.3 | 9.12 | 4.84 |
| 1.70V/cell | 347.3 | 255.5 | 192.5 | 164.4 | 117.7 | 82.8 | 66.7 | 36.2 | 25.9 | 20.7 | 17.5 | 11.4 | 9.35 | 4.88 |
| 1.67V/cell | 387.6 | 269.1 | 203.0 | 170.8 | 122.5 | 86.0 | 68.1 | 36.8 | 26.2 | 21.0 | 17.7 | 11.5 | 9.51 | 4.92 |
| 1.60V/cell | 418.9 | 273.6 | 209.9 | 175.6 | 124.9 | 87.3 | 69.3 | 37.4 | 26.5 | 21.2 | 17.9 | 11.6 | 9.57 | 4.96 |

Constant Power Discharge (Watts/cell) at 25 °C (77°F)

| F.V/Time | 5min | 10min | 15min | 20min | 30min | 45min | 1h | 2h | 3h | 4h | 5h | 8h | 10h | 20h |
|------------|-------|-------|-------|-------|-------|-------|-------|------|------|------|------|------|------|------|
| 1.85V/cell | 516.2 | 366.1 | 294.7 | 265.1 | 198.1 | 147.6 | 120.1 | 66.7 | 47.9 | 38.6 | 33.0 | 22.0 | 18.3 | 9.71 |
| 1.80V/cell | 573.5 | 417.9 | 325.2 | 286.9 | 210.0 | 154.0 | 124.2 | 69.3 | 49.7 | 39.9 | 34.3 | 22.6 | 18.4 | 9.85 |
| 1.75V/cell | 608.1 | 453.2 | 349.3 | 303.4 | 221.4 | 156.9 | 126.7 | 70.8 | 50.7 | 40.8 | 34.8 | 22.8 | 18.6 | 9.92 |
| 1.70V/cell | 662.4 | 484.5 | 357.0 | 315.7 | 227.5 | 161.0 | 130.6 | 71.3 | 51.3 | 41.2 | 35.1 | 22.9 | 19.0 | 9.96 |
| 1.67V/cell | 720.0 | 506.6 | 360.0 | 326.0 | 235.5 | 166.3 | 132.7 | 72.2 | 51.6 | 41.6 | 35.3 | 23.1 | 19.2 | 9.98 |
| 1.60V/cell | 758.0 | 510.2 | 393.8 | 331.9 | 237.6 | 167.4 | 133.7 | 72.6 | 51.8 | 41.6 | 35.3 | 23.1 | 19.2 | 10.0 |



PLX-Pure Lead High Rate PLX12-360 (12V360W)



Applications

- UPS
- Emergency lighting
- Emergency power supply
- Electrical starting
- Power tools

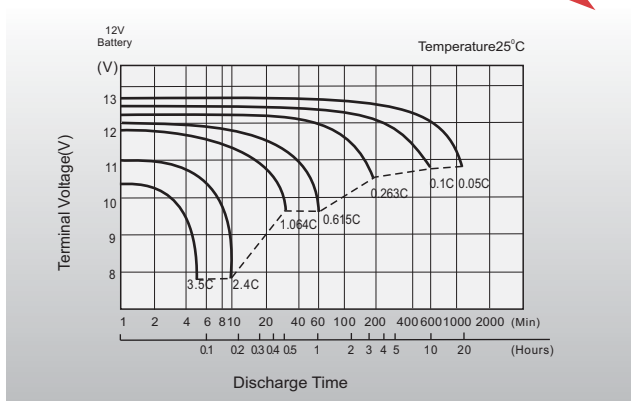
General Features

- 15 years design life(25°C)
- Premium ABS+PC jar & covers, Flame Retardant to UL94 V-0
- High-rate performance, high energy density
- High quality AGM separators minimize electrical resistance to allow high current discharging properties

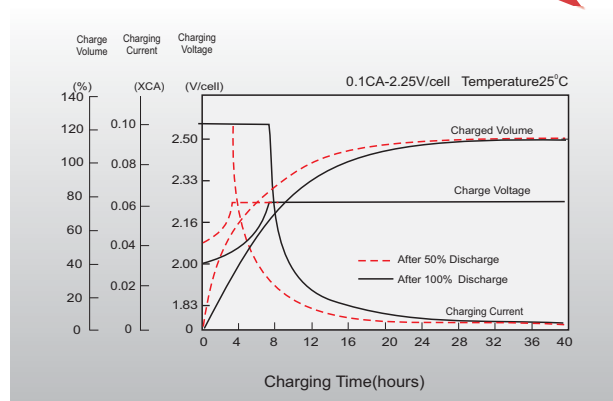
Standards

- Classified as "Very Long Life" according to Eurobat
- CE, UL Certified
- Manufactured in Leoch@IATF16949, OHSAS 18001, ISO 9001 and ISO 14001 certified production facilities

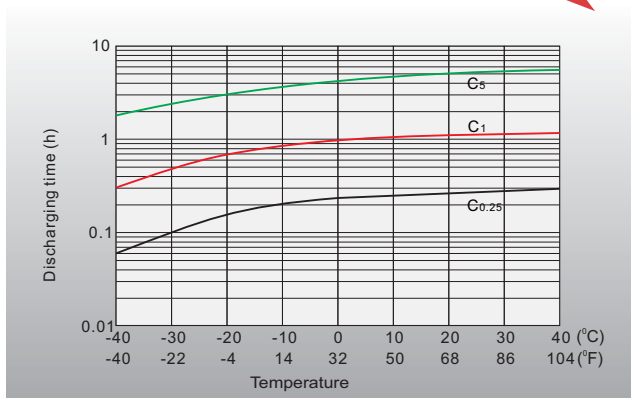
Discharge Characteristics



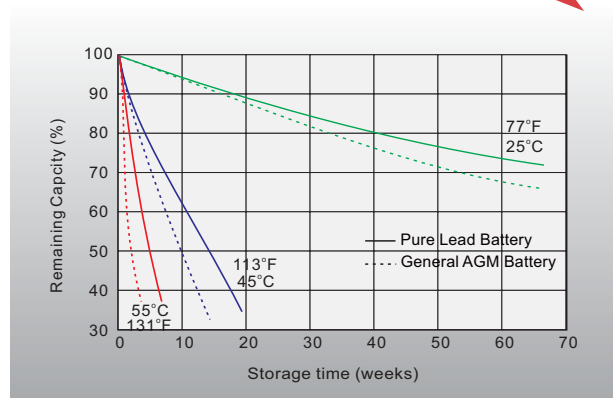
Float Charging Characteristics



Effects of Temperature on Discharging Time



Self-discharge Characteristics



Sales Offices Worldwide

China Sales Office

5th Floor, Xinbaohui Bldg., Nanhai Blvd.,
Nanshan, Shenzhen, China. 518052
Tel: +86-755-86036060 (100 lines)
Fax: +86-755-26067269
E-mail: export@leoch.com

HongKong Sales Office

Workshop C, 33/F, TML Tower, No. 3 Hoi Shing Road,
Tsuen Wan, New Territories, Hong Kong
Tel: +852 35786666
Fax: +44 1452 690125
E-mail: sales.hk@leoch.com

Singapore Sales Office

No. 1 Tech Park Crescent,
Singapore 638131
Tel: +65 68636078
Fax: +65 6863 6079
Email: sales.sg@Leoch.com

Australia Sales Office

2 /29 Tarlington Place, Smithfield. NSW 2164
Australia
Tel: 02 9756 0950
E-mail: sales.au@leoch.com

North America Sales Office

19751 Descartes
Foothill Ranch, CA 92610, USA
Tel: 949-588-5853
Fax: 949-588-5966
E-mail: sales@leoch.us
Http:// www.leoch.us

UK Sales Office

9B Wheatstone Court, Waterwells, Business Park,
Gloucester, GL2-2AQ, UK United Kingdom
Tel: +44(0) 1452 729428 / 1452 729696
Fax: +44 1452 690125
E-mail: Sales.Europe@leoch.com
Http:// www.leoch.eu

EMEA Sales Office

1 Deligiorgi St., 121 31 Athens,
Greece
Tel: +30 210 5760318 (2 lines)
E-mail: support_EMEA@leoch.com
Http:// www.leoch.eu

India Sales Office

Shed no.A-53(b), 2nd Stage of Peenya Industrial Area,
Bangalore North Taluk, Bangalore-560058, India
Tel: +91-80-23440018/23440019
Fax: +91-80-23440017
E-mail: indiasales@leoch.com



[Http://www.leoch.com](http://www.leoch.com)

© 2021 LEOCH. All rights reserved.

Trademarks and logos are the property of LEOCH and its affiliates unless otherwise noted.
Subject to revisions without prior notice.

Publication No.: LB-PLX12-360-PD-EN-V1.2-202101